

Facades Projects



H.A. Marks Facades

H.A Marks are an experienced Cladding Contractor with Design Capability. We offer a complete through the wall façade cladding services and have specialised in facades since 2002.

Cladding Facade Services

- External/internal steel frames and cement boarding
- Insulated (EWI) render
- Solid renders
- Ceramic and metal cladding and rainscreens
- Timber claddings and rainscreens
- Insulated brick cladding and brick slips
- Terracotta rainscreens
- Composite and decorative board claddings
- All associated flashings, copings and trims
- Approved installer for many systems and suppliers with warranties available
- ISO 45001, 9001 and 14001 audited and accredited
- Experienced workforce, trained in the systems we install
- Responsible and proactive culture in respect of health and safety from director level to site operatives
- Design and costing advice

Remedial Works

- Surveys/Investigative Assistance & Opening Up Works to Problem Cladding Systems
- Assistance in carrying out Intrusive Surveys
- Tenant & Client Liaison Services
- Access Scaffolding & Plant Hire
- Security
- Remediation Works & Fire Breaks/Passive Fire Protection
- Stripping Defective Cladding Systems & Installing New Cladding Systems



Approved installers of the following systems:

Alsecco	Kingspan
Metsec	Hadley Steel Frames
CGL	James & Taylor
Corium	Rockshield
Creaton	Sto
Eternit	Tellings
Envirowall	Trespa
Weber	Wetherby
Rock panel	Permarock
ACM	

Qualifications

Our long trading history help to demonstrate our competency and ability.



Chatham Place - Phase 2



Client: Galliford Try, Cowley, Uxbridge, Middlesex **Value:** £2,250,000

The Project consisted of the design and build of the complete external wall to an 18 Storey apartment building. The external wall finishes included a mixture of 3500m² of aluminium rainscreen cladding and 2500m² of insulated render, with 50% of the external envelope being curved.

Systems Used:

- CGL aluminium tray panels; ideal combi windows.
- Sto insulated render system.

Challenges:

- Cladding to the curved areas (setting out) and interface with Ideal Combi windows.
- Cladding interface with balconies and glass balustrade.
- Working around scaffolding ties.
- Meeting tight programme and dates for scaffolding drops.

Main works consisted of:

- Installation of Metsec SFS external wall.
- Installation of composite windows and balcony doors.
- Installation of Sto external wall insulation.
- Installation of aluminium cladding panels, in 3 varying colours, including curved cladding panels.
- Installation of aluminium cills, flashings and copings.
- Installation of Schuco Curtain Walling and Record Sliding Doors to ground floor entrance and retail areas.
- Installation of glazed sliding entrance doors.
- Installation of External louvre doors.
- Installation of glass corners to the acute external corner of the building. The balcony was concrete, to which we clad the soffit and also cladd half way up the glass balustrade.

Easthill, Wandsworth



Client: Ardmore Construction Value: £1,000,000

This scheme consisted of five large, residential, apartment blocks and was built for John Laing Homes. H.A. Marks installed an SBD Webber Insulated Render System to a block-work frame substrate in the five residential blocks.

We installed a light steel framing system with sheathing boards, a tyvec layer with timber cedar cladding to the Penthouses. Insulation was installed between the framing.

As with all H.A. Marks installations, the works were quality inspected and signed off on a regular basis, by our management and the inspection teams from the various manufacturers of steel frame, insulated render, terracotta & weatherboarding as well as the client and NHBC.

Manor Place Depot



Client: Notting Hill Genesis **Value:** £2,120,000

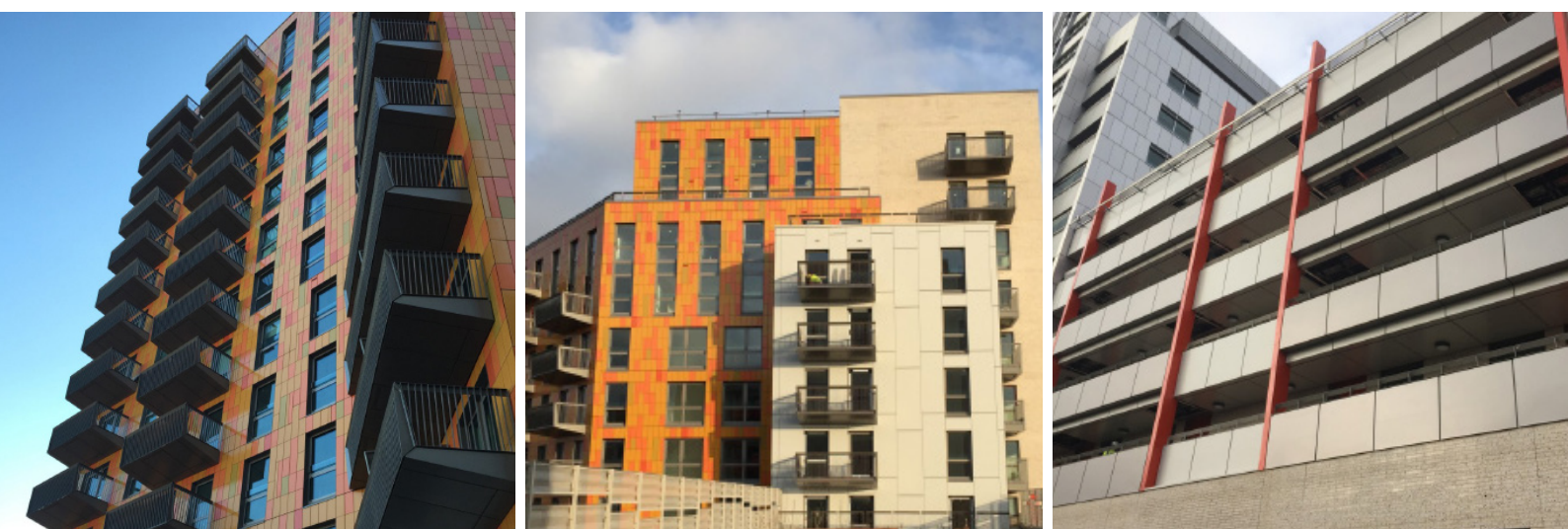
Manor Place Depot comprised of 270 new homes and restored a Grade II listed former bathing complex for commercial uses, surrounded by newly created and high-quality public realm.

Works involved:

The External Façade Cladding Work Package consists of the following principle items:

- Cedral comprising of Marley Eternit Cedral panels Colour C04 Dark Brown size 10 x 190 mm fixed with stainless steel screw an overlap pattern onto 110x60x2mm T Rail on "helping hands" brackets fixed to Metsec SFS including 125 mm Rockwall Duoslab with a Tyvek Breather Membrane
- Rendering comprising 1800m² of STO-REND fibre Plus Colour Sto 37304 Grey back to Blockwork. ACM Panel comprising 925m² of 4mm
- ACM Panel Colour Anthracite Grey 105 (RAL 7016) fixed back to Metsec frame with Aluminium Angle and 180mm Helping Hand. With 125mm Rockwall Duoslab with a Tyvek Firecurb Housewrap
- Soffits comprising 2250m² of 8mm Marley Eternit Equitone (Natura) Colour Portland N294. Fixed back to 50x25 Fischer Box Section to Aluminium L Rails and Helping Hands. Perimeter Trim was installed RAL 7016. Petrarch Stone comprising 225 m² of a 10mm
- Petrarch Stone Colour 726 Portland Rivit fixed back to 100x60mm T Rails and Helping Hands to the Concrete Column and beam structure
- Shackerley Stone comprising of 12mm Shackerley Ceramic Stone secret fixed back to HG Rails onto T Rails and helping Hands
- Copings comprising 1100m long of a 2mm Aluminium Coping RAL 7016 fixing to a 3mm Galvanised Steel Retention Bracket. This also has 18mm Continuous Plywood and EPDM to strengthen and weather
- Reveals and Base Flashing Comprising of a 2mm Aluminium to RAL 7016
- Others Works comprising of EPDM, Fire Barriers, Water Testing

Rathbone Market



Client: John Sisk & Sons **Value: £1,960,000**

H.A. Marks were a cladding subcontractor on this project, the principle contractor was John Sisk & Sons.

The works consisted of the Design, Procurement and installation of Metsec Framing, Terracotta Rainscreen Cladding, Trespa Meteon Rainscreen Cladding, Aliva Ceramic Rainscreen Cladding and all associated Flashings, membranes and insulation to meet with projects requirements.

- Cold Rolled Steel Framing
- Cement Particle Board
- EPDM
- Mineral Insulation between Metsec Studs
- Brick Channels & Cavity Insulation to Blockwork Cavity
- Vapour Control Layer
- Rainscreen Insulation
- Breather Membrane
- Rainscreen Systems - James & Taylor Moeding Alphaton
- Trespa Meteon Rainscreen
- PPC Aluminium Cladding to Building D Walkway Soffits, Fascias
- Columns and Balustrades
- Firebreaks
- Design
- Acoustic Design and Testing
- On site Weather Tightness / Pull out Testing

Lygoe House



Client: Private **Value: £230,000**

This Social Housing Project required the design, supply and installation of approximately 3000m² of light steel frame, finished in brickwork and zinc. It was insulated internally and externally to achieve exceptionally high ratings for thermal and acoustic resistance. Perforated intumescent fire breaks were built in to the rain screen cavity to achieve up to 1 hour fire separation whilst maintaining the drained ventilated cavity construction required. Though the low level maisonettes were straightforward, the elliptical 9 storey tower block posed some challenging design and installation issues, requiring co-ordination, setting out and interfaces with windows, brickwork, zinc, structural steel curved balconies, concrete frame and dry-lining.

Next Retail Store



Client: Gallagher Group **Value:** £ 667,000

Next is a new outlet store within Eclipse Park which is on the outskirts of Maidstone. The Nest store is 40,000 sq ft superstore built over 3 floors.

Works involved:

The External Façade Cladding Work Package consists of the following principle items:

- Rainspans comprising of 2000m² of 175mm Eurobond
- Rainspain panels fixed back directly to hot rolled steel
- Corium Brickslip 1250m² - brick slips fixed to horizontal rails which are fixed directly to the rainspan
- Areolite Stone comprising 650m² of 20mm tiles - International Areolite Stone fixes onto horizontal rail which are fixed to the Rainspan
- High level panel installed with undercut anchors
- Soffits comprising 158m² of 10mm Trespa Panels
- Rivet fixed back to Aluminium Rails
- Copings comprising 1100m long of a 2mm aluminium coping fixed to a 3mm galvanised steel angle
- Feature channels, comprising of a 2mm aluminium profile which enclosed around the corium brickwork
- Coping & Base Flashing, comprising of a 2mm aluminium to RAL 7016
- Others works comprising of Metsec false Column, EPDM & Fire Barriers

Fisher Close, Waltham Cross



Client: Lakehouse **Value:** £500,000

The project involved an over clad system to a 1960's concrete built block funded by CESP, to improve both aesthetics and thermal performance.

Works consisted of:

STO Insulated Render Systems to the main external walls

Laminate colour panels to the stair cores and circulation areas

Cedar infills installed around front doors

Bankside Lofts, Hopton Street



Client: Bankside Lofts Management Ltd Value: £670,000

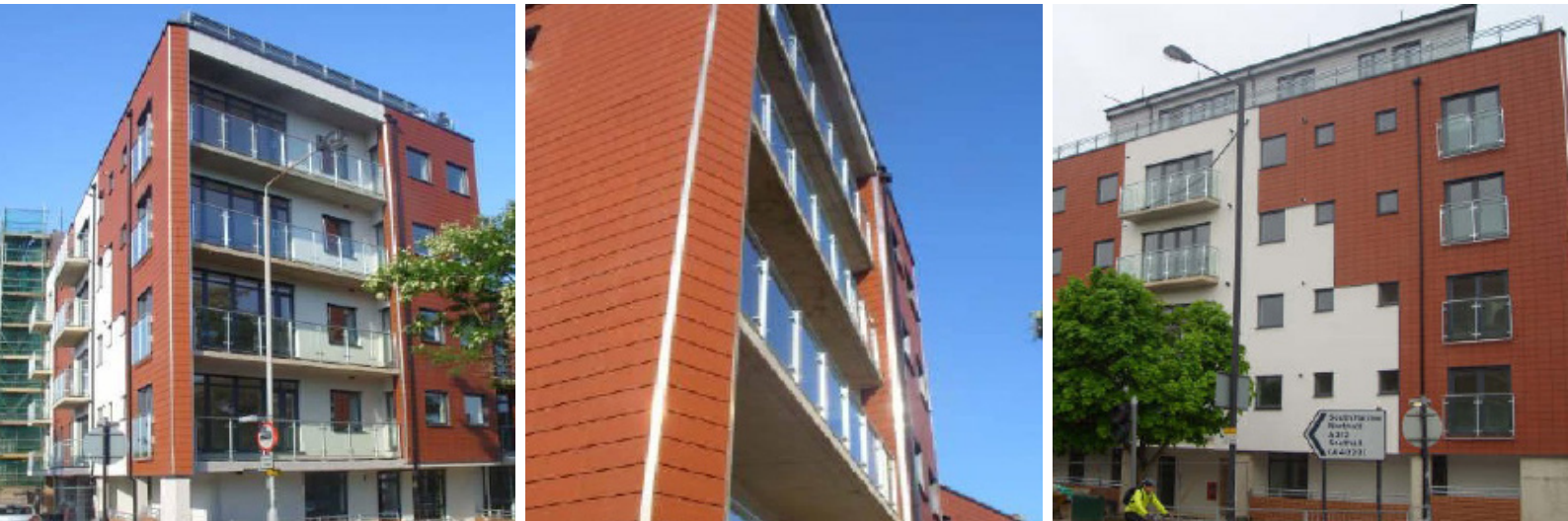
The building was constructed approximately 15 years ago as high end, residential apartments with mixed use, commercial (including an Art Gallery) to the ground floor and residential above. It had been clad in an Insulated Render System, over a part steel and part concrete frame. There had been a failure of the system which was the subject of a BRE report.

H.A. Marks are a trained and approved Sto Insulated Render Specialist with our in-house Facades division offering expertise in design, management and installation of a wide range of cladding and render systems. We were employed as a specialist Principal Contractor to carry out extensive repairs and overclad to the failed fabric in order to reach current standards.

The entire building was re-rendered with a Sto, fully acrylic, thin coat, reinforced render system in bespoke colours to match planning requirements. During the contract major additional remedial works were identified by the client and were carried out and completed within our original program.

The contract work was carried out under the JCT design and build form of contract. The installation benefited from a 15 year, insurance backed, latent defects warranty.

Northolt Road



Client: Private **Value:** £300,000

These exclusive apartments were a H.A. Marks, through the wall solution.

Works incorporated:

- *Design*
- *Installation of light steel framing*
- *Sheathing boards*
- *Insulation internally and externally*
- *Breather membranes*
- *Facades finished in a mixture of terracotta rain screen, insulated render and cement weather boarded rain screen to the Penthouses*

H.A. Marks did the whole wall package and were able to keep setting out and co-ordination issues to a minimum, particularly in the Terracotta Facades where cuts in the tiles would be aesthetically negative.

As with all H.A. Marks installations, these works were quality inspected and signed off on a regular basis by our Management and inspection teams from the various manufacturers of steel frame, insulated render, terracotta and weatherboarding, as well as the client and NHBC.

Premier Inn Canterbury



Client: RG Carter Projects Limited Value: £570,000

Supply & installation of Eternit, Petrarch, Stone Cladding and Insulated Render.

Riverside Mansions



Client: Riverside Mansions Management Co. Ltd Value: £206,000

The Facades/Cladding Envelope that we applied to the existing apartment building, incorporates a 15 year insurance backed defects warranty.

The works consisted of:

- *Installation of the over clad to the existing facades part render finish*
- *Part brick slip finish*
- *Adaptations to existing fixtures and fittings*
- *Insulated render system*
- *Insulated brick slips*

The Malls Shopping Centre



Client: Wates Construction Value: £1,000,000.00

The project consisted of the design and build with part over clad to existing structures and new cladding installations to new build sections of the Shopping Mall. We designed various support systems from lightweight rain screen to heavyweight purlins support systems.

We designed and installed vertically curved and horizontally curved support systems to carry:

- *STO Insulated Render Systems*
- *Rain Screen Render Systems*
- *Perforated aluminium rain screens - both flat and curved*
- *Multi coloured terracotta rain screens*
- *Terracotta baggette (Louvred) rain screens*
- *Alluco bond pillasters*
- *We also supplied and fitted the associated flashings and trims*

Corrib House, 1 Beadman Street, London, SE27 0DN

Tel: 0208 659 6918 Email: mail@hamarks.com www.hamarks.com

